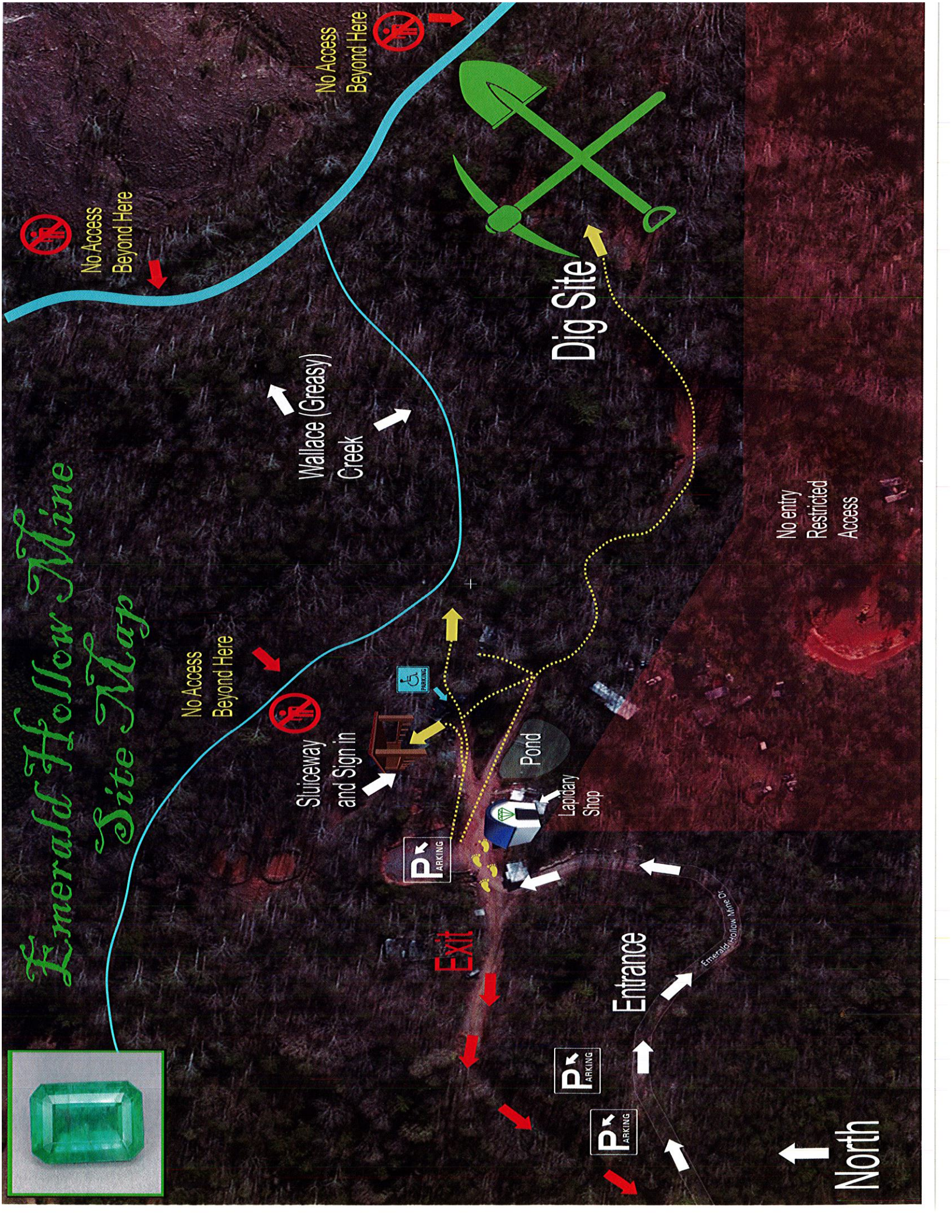
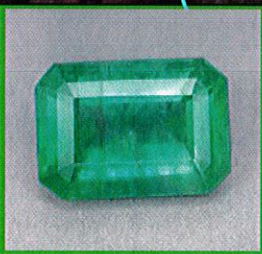


Emerald Hollow Mine Site Map



Emerald Hollow Mine Gem Identification Card



484 Emerald Hollow Mine Drive Hiddenite NC 28636

Office (828)635-1126 Lapidary (828)635-7548

Visit us online at www.emeraldhollowmine.com or follow us on Facebook!



MIKE'S FUN FACTS: A cabochon (or "cab") is a stone that is cut with a highly polished rounded or convex top, with a flat or slightly domed base. Cabochons are not really "cut", rather they are simply shaped and polished. Today most transparent gemstones are faceted - fashioned with a series of flat planes known as facets. A well-crafted geometrical arrangement of facets will reflect light both internally and externally, maximizing the brilliance and fire of the stone.

NATIVE TO HIDDENITE

NATIVE TO NORTH CAROLINA

NATIVE TO NORTH AMERICA



Thank you!

MOHS HARDNESS SCALE

- 1 - Powdered by fingernail
- 2 - Scratched by fingernail
- 3 - Scratched by penny
- 4 - Easily scratched by knife
- 5 - Scratched by glass
- 6 - Scratched by steel file
- 7 - Scratches window glass
- 8 - Easily scratches quartz
- 9 - Easily scratches topaz
- 10 - Cannot be scratched

MOHNS

MOHNS

\$10.00 off!

Sluicing & Creeking
for You and a Friend
VALID FOR ONE USE

Coupons may be combined. Tool rentals are not included in this offer. Expires upon use.

\$10.00 off!

Sluicing & Creeking
for You and a Friend
VALID FOR ONE USE

Coupons may be combined. Tool rentals are not included in this offer. Expires upon use.

Lapidary Special!

10% off ALL Silver Settings
VALID FOR UP TO 5 PIECES

Courtesy of our on-site lapidarists who love you. Coupons may be combined. Expires upon use.

Lapidary Special!

\$10.00 off 2 matching cabochons
VALID FOR ONE USE

Courtesy of our on-site lapidarists who love you. Coupons may be combined. Expires upon use.