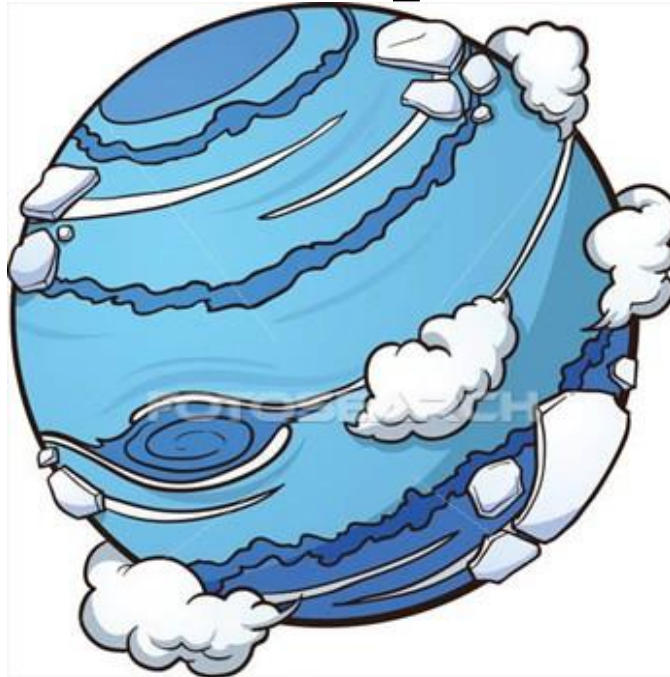


# Atmosphere



k14745550 fotosearch.com

You've arrived at the:  
**Atmosphere**

*Pick up the unifix cube and roll the die to see where you will travel next!*

If your die reads: 1 or 2

Lightning strikes! Nitrogen gas is made into a solid and travels to the **soil!**

If your die reads: 3

Blue green algae and bacteria convert you into a solid bringing you to the **soil!**

If your die reads: 4

Bean plants extract you from the air and bring you to the **soil!**

If your die reads: 5 or 6

Some nitrogen can get into the water in clouds and then fall as **rain!**

# Surface Water



You've arrived at the:  
**Surface water**

*Pick up the unifix cube and roll the die to see where you will travel next!*

If your die reads: 1 or 2

You are just the sort of nitrogen that plants need to live. You are now within a **live plant!**

If your die reads: 3 or 4

You travel through the rivers and streams to the **ocean!**

If your die reads: 5 or 6

You seep into deep underground in the **groundwater!**

# Rainwater



You've arrived at:

**Rainwater**

*Pick up the unifix cube and roll the die to see where you will travel next!*

If your die reads: 1

You fall into a lake or stream so now you are part of **surface water**.

If your die reads: 2 or 3

You fall on the land and become part of the **soil!**

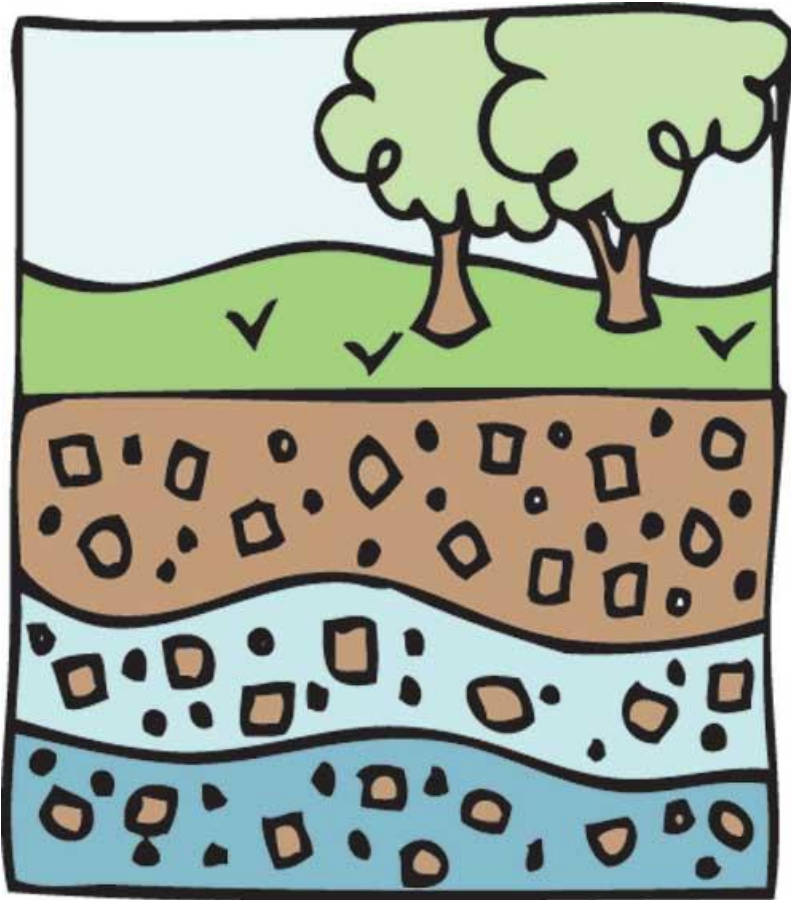
If your die reads: 4

You seep into deep underground in the **groundwater!**

If your die reads: 5 or 6

You rain into the **ocean!**

# Groundwater



You've arrived at:  
**Groundwater**

*Pick up the unifix cube and roll the die to see where you will travel next!*

If your die reads: Odd numbers (1, 3, or 5)  
The groundwater you are dissolved within travels and you become part of the **surface water!**

If your die reads: Even numbers (2, 4, or 6)  
The groundwater you are dissolved within travels and you become part of the **ocean!**

# Fertilizers



You've arrived at:  
**Fertilizers**

*Pick up the unifix cube and roll the die to see where you will travel next!*

If your die reads: 1 or 2

You dissolve and wash into the **surface water!**

If your die reads: 3 or 4

You become part of the **soil!**

If your die reads: 5 or 6

You are just the sort of nitrogen that plants need to live. You are now within a **live plant!**

# Soils



You've arrived at:

## **Soils**

*Pick up the unifix cube and roll the die to see where you will travel next!*

If your die reads: 1

You dissolve and wash into the **groundwater!**

If your die reads: 2

You dissolve and wash into the **surface water!**

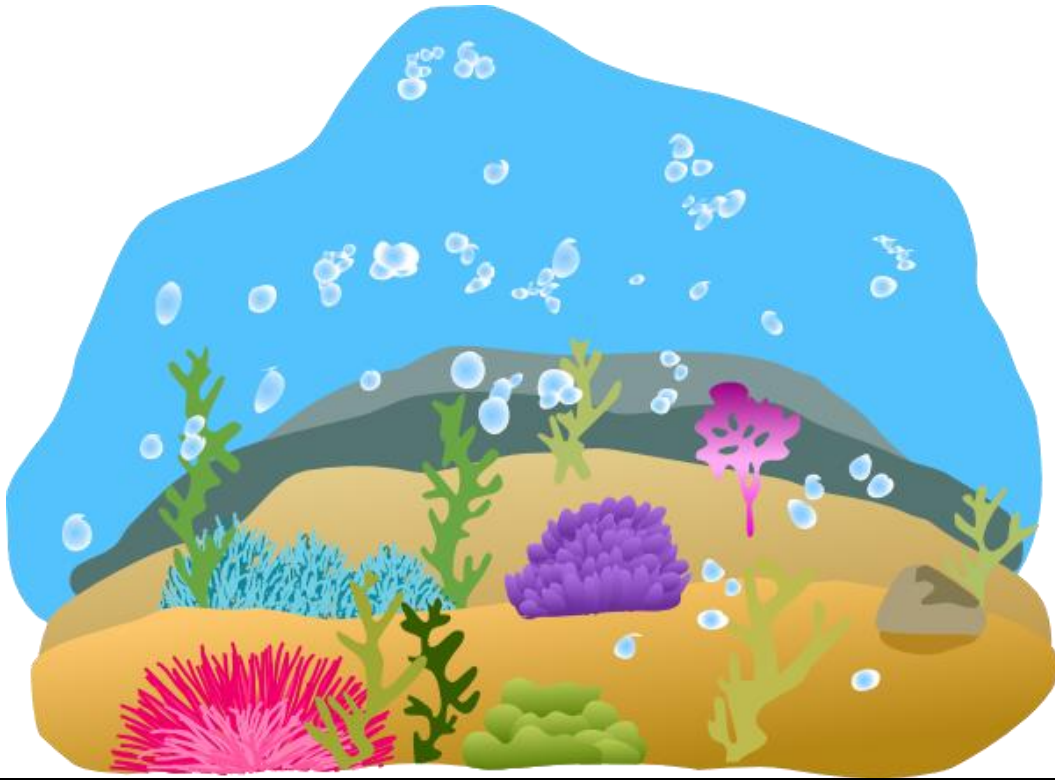
If your die reads: 3 or 4

You are just the sort of nitrogen that plants need to live. You are now within a **live plant!**

If your die reads: 5 or 6

Bacteria have transformed you into nitrogen gas and you are now part of the **atmosphere!**

# Ocean



You've arrived at the: **Ocean**

*Pick up the unifix cube and roll the die to see where you will travel next!*

If your die reads: 1

Look out! Water is on the move! You have washed into the **groundwater!**

If your die reads: 2 or 3

You are just the sort of nitrogen that plants need to live. You are now within a **live plant!**

If your die reads: 4, 5, or 6

Bacteria have transformed you into nitrogen gas and you are now part of the **atmosphere!**

# Live Animals



You've arrived at:

**Live animals**

*Pick up the unifix cube and roll the die to see where you will travel next!*

If your die reads: Odd numbers (1, 3, or 5)

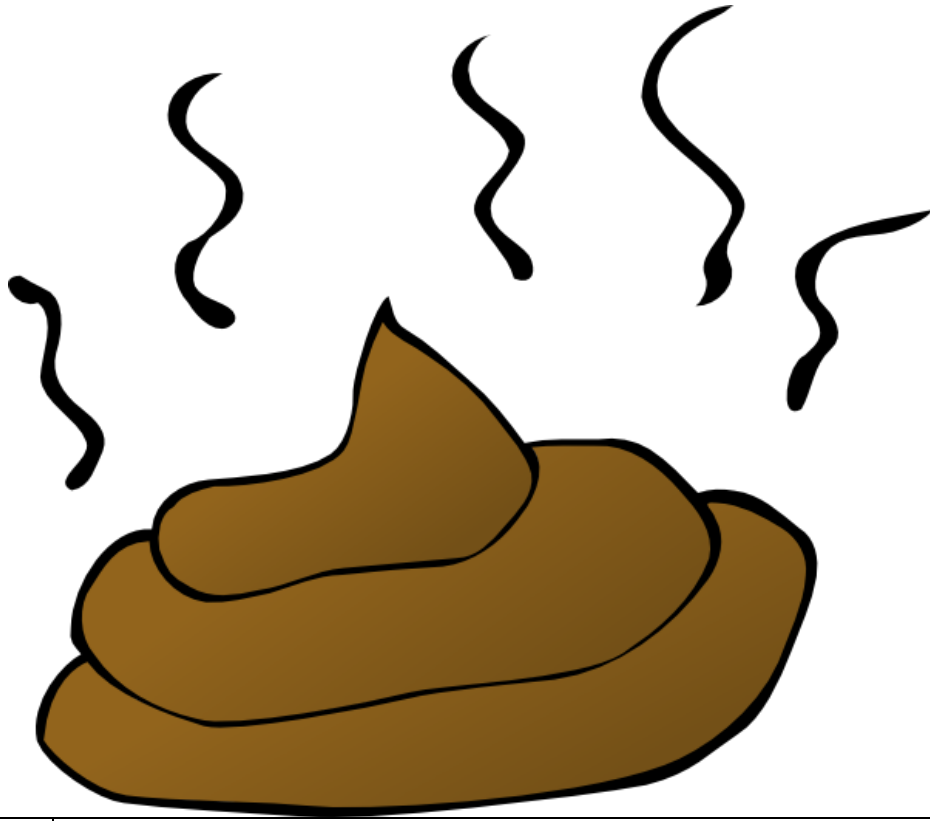
The animal that you are within has died. Go to **dead plants and animals**.

If your die reads: Even numbers (2, 4, or 6)

Congratulations! The animal that you were within has excreted and you are in its waste. Go to **animal waste!**



# Animal Waste



You've arrived at:

**Animal waste**

*Pick up the unifix cube and roll the die to see where you will travel next!*

If your die reads: 1 or 2

Look out before someone steps in you! Now you are decomposing in the **soil!**

If your die reads: 3 or 4

A farm supply company has picked you up and made you into **fertilizer!**

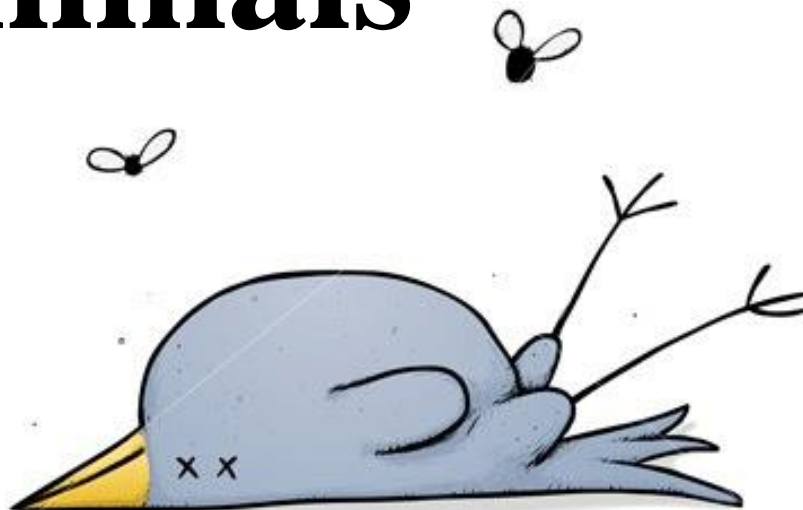
If your die reads: 5 or 6

What's that in the water? You have dissolved into **surface water!**

# Dead Plants and Animals



© Can Stock Photo - csp4315340



You've arrived at:  
**Dead plants and animals**

*Pick up the unifix cube and roll the die to see where you will travel next!*

If your die reads: 1 or 2

You are decomposed and become part of the **soil!**

If your die reads: 3

You are decomposed and become dissolved in **surface water!**

If your die reads: 4

You are decomposed and become dissolved in the **ocean!**

If your die reads: 5 or 6

**Forest Fire!** The wood you were within is burnt and you have been released into the **atmosphere.**

# Live Plants



You've arrived at:  
**Live plants**

*Pick up the unifix cube and roll the die to see where you will travel next!*

If your die reads: Odd numbers (1, 3, or 5)  
The plant that you are within has died. Go to **dead plants and animals**.

If your die reads: Even numbers (2, 4, or 6)  
An animal has eaten the plant that you are within! Go to **live animals!**