

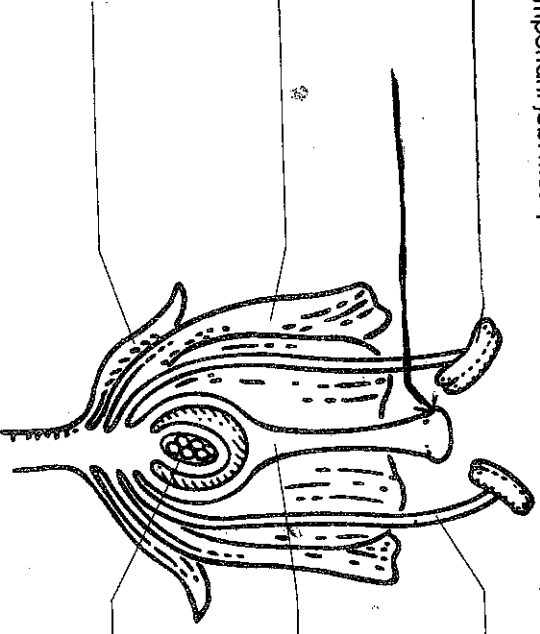


Ident#: _____

Name _____

Flower Power

Flowers are beautiful to look at and pleasant to smell, but they also have a very important job. Most plants make seeds inside the flower.



Color and label each flower part. Use the chart below to help you.

Flower part	Description	Color
pistil	A large center stalk, often shaped like a water bottle.	ye llow
stamen	A tall, thin stalk with a knobbed tip. It holds grains of pollen.	brown
petal	Brightly colored and sweet-smelling leaves.	red
sepal	Small leaf-like part at the base of the flower.	green
ovary	Ball-shaped part at the base of the pistil. This is where the seeds develop.	blue
anther	top of stamen; produces pollen	purple
shyama	sticky part of pistil	orange

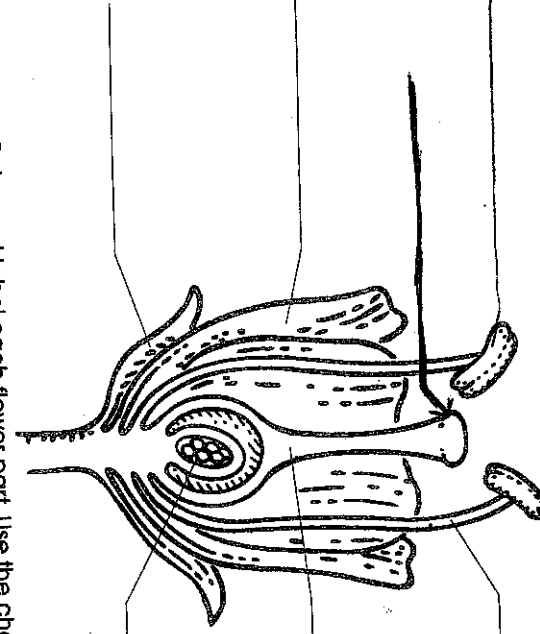


Ident#: _____

Name _____

Flower Power

Flowers are beautiful to look at and pleasant to smell, but they also have a very important job. Most plants make seeds inside the flower.



Color and label each flower part. Use the chart below to help you.

Flower part	Description	Color
pistil	A large center stalk, often shaped like a water bottle.	ye llow
stamen	A tall, thin stalk with a knobbed tip. It holds grains of pollen.	brown
petal	Brightly colored and sweet-smelling leaves.	red
sepal	Small leaf-like part at the base of the flower.	green
ovary	Ball-shaped part at the base of the pistil. This is where the seeds develop.	blue
anther	top of stamen; produces pollen	purple
shyama	sticky part of pistil	orange