

Under WarmUps (#0)



Why is it important to learn about geologic activity and the region around you?



Quick Conference



With your PenPal Team:

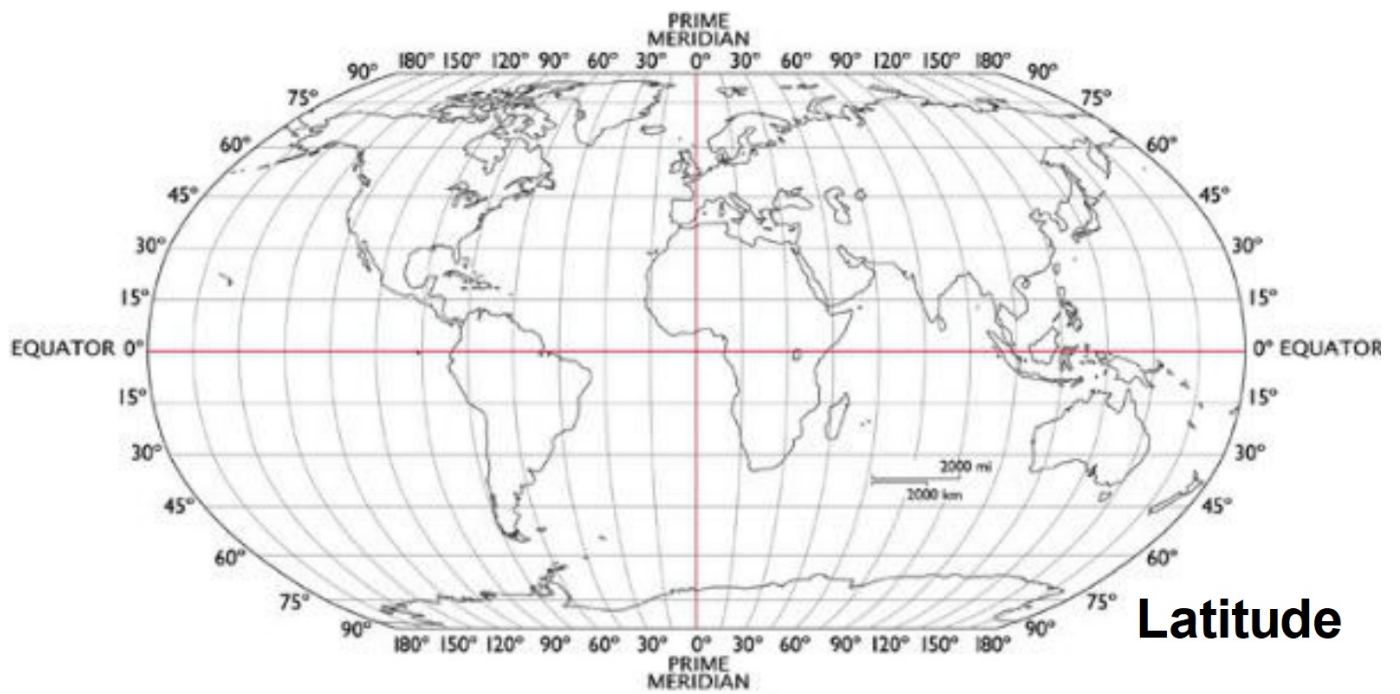
- Discuss geologic activity (see if you match; **add**)
- Discuss observations from Google Earth (**add** any observations that you may not have noticed)
- Share thoughts on how your Earth structure developed
- Identify on the map on the back (use Latitude and Longitude)--label PenPal's location with a ★



Refresh: Longitude/Latitude

Item #2: LS1 RG

Longitude



Latitude

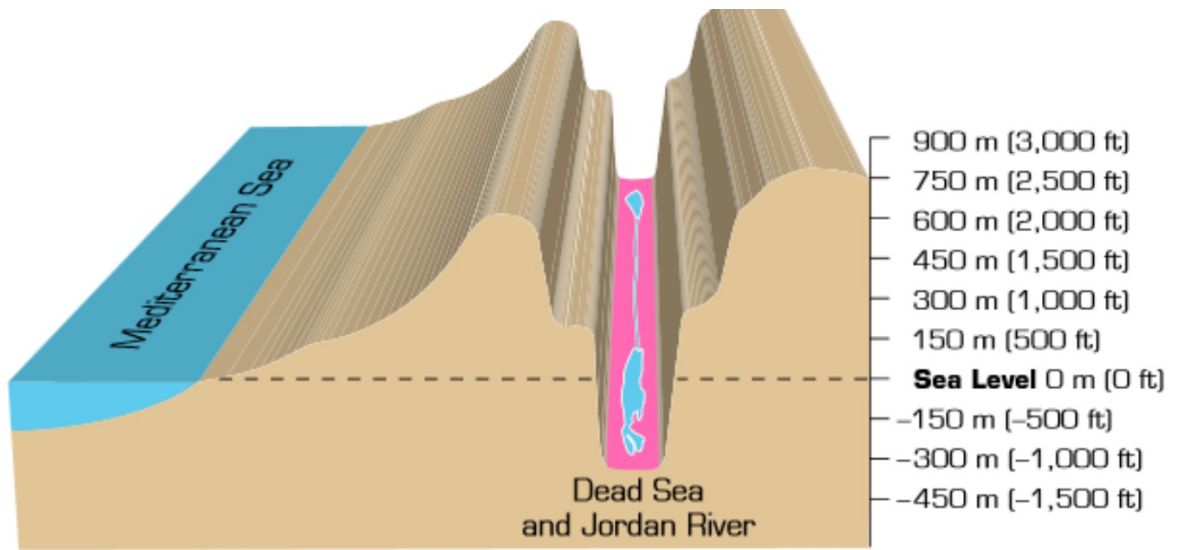
What do you think this graphic below is trying to show?



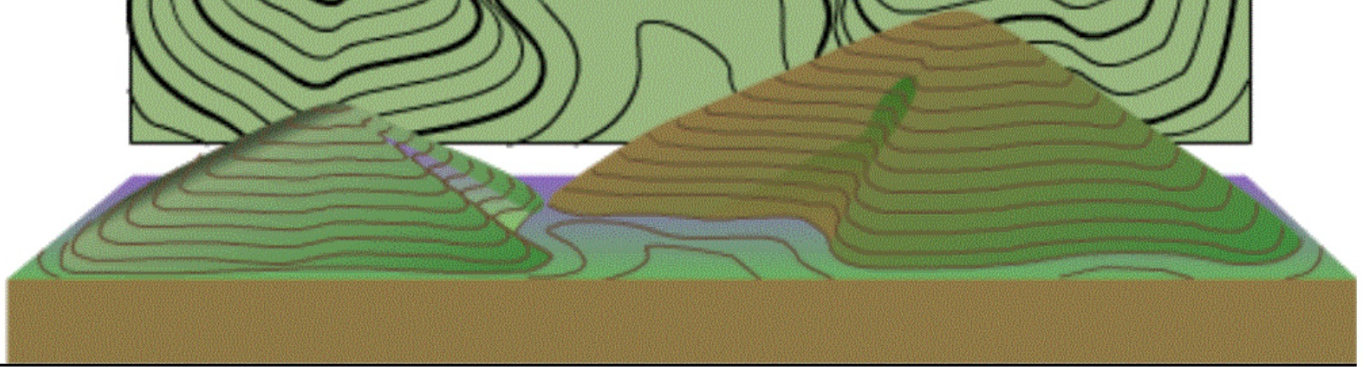
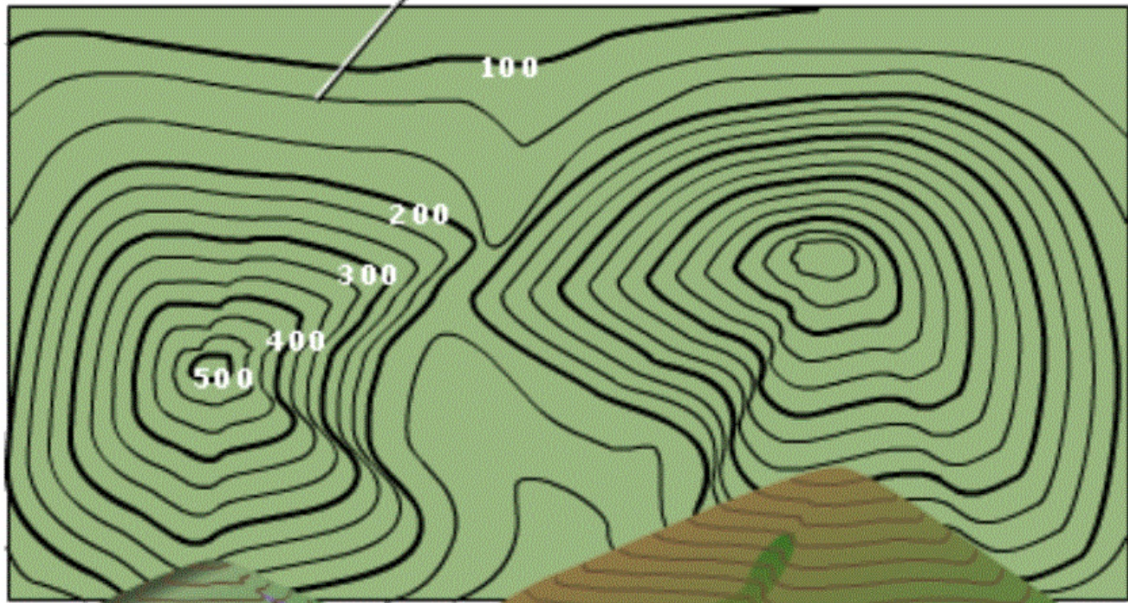
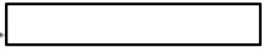


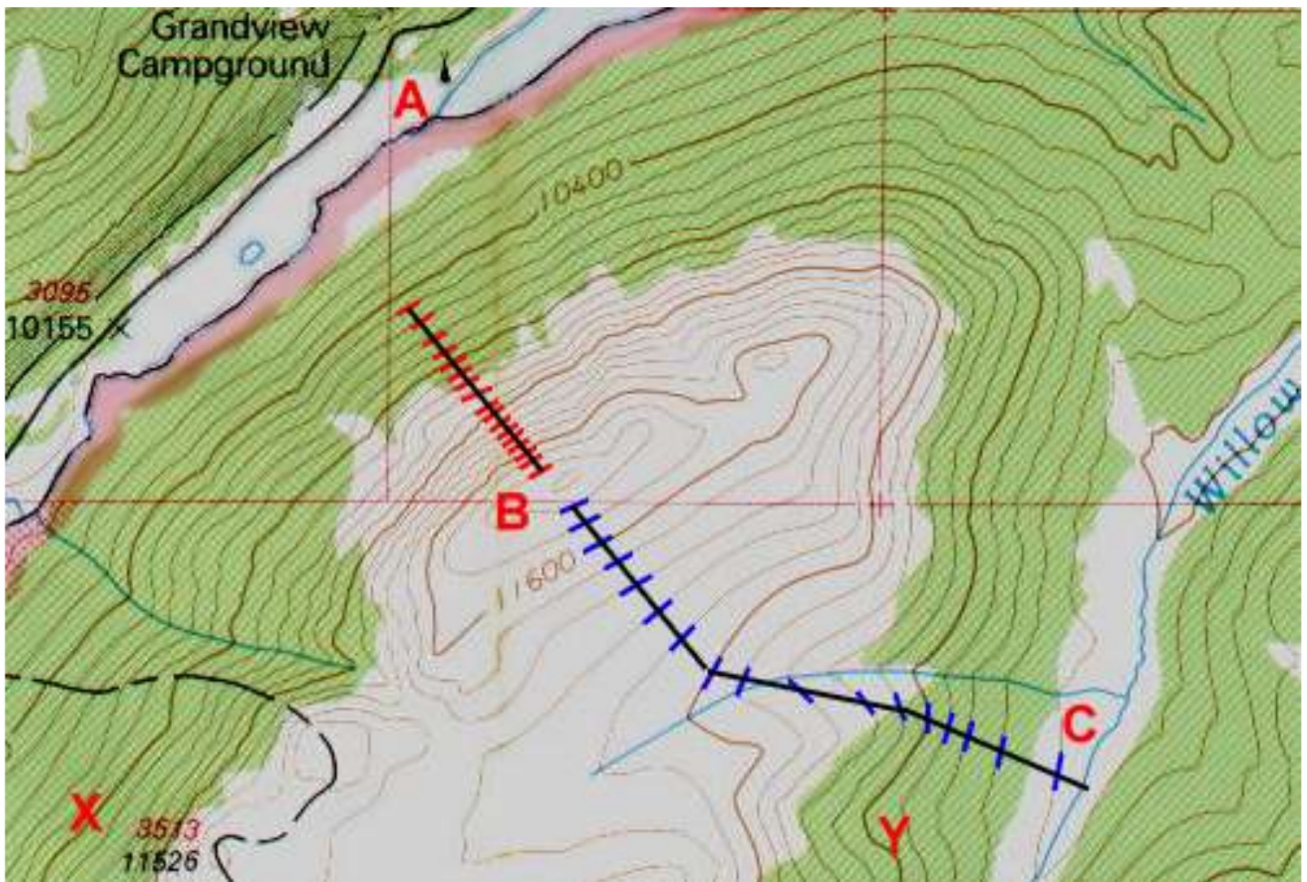
© 2002 QT Luong / terragalleria.com

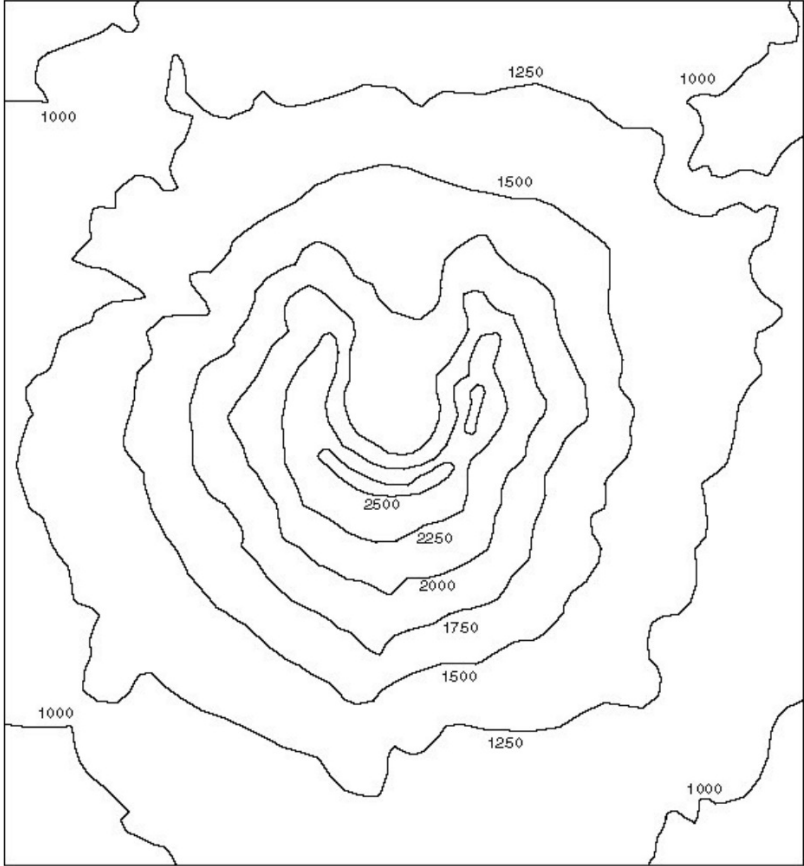
#gaar0020



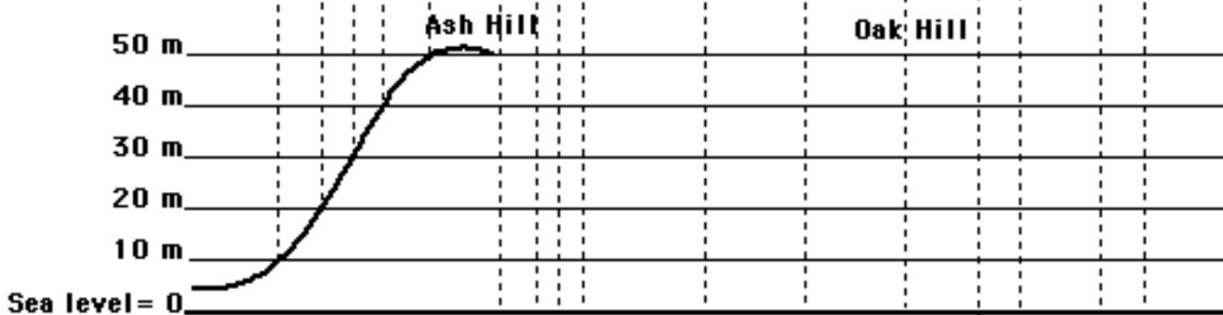
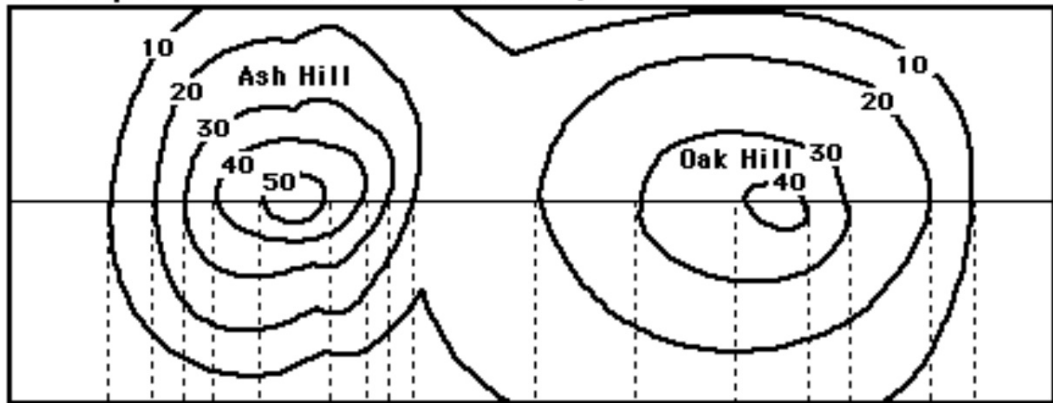
Topographic Map







Topographic Map (with contour lines that show points that are on the same level)



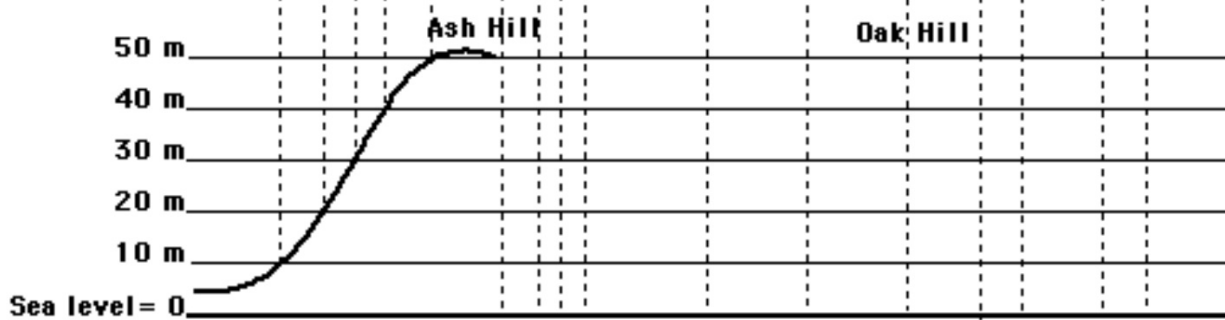
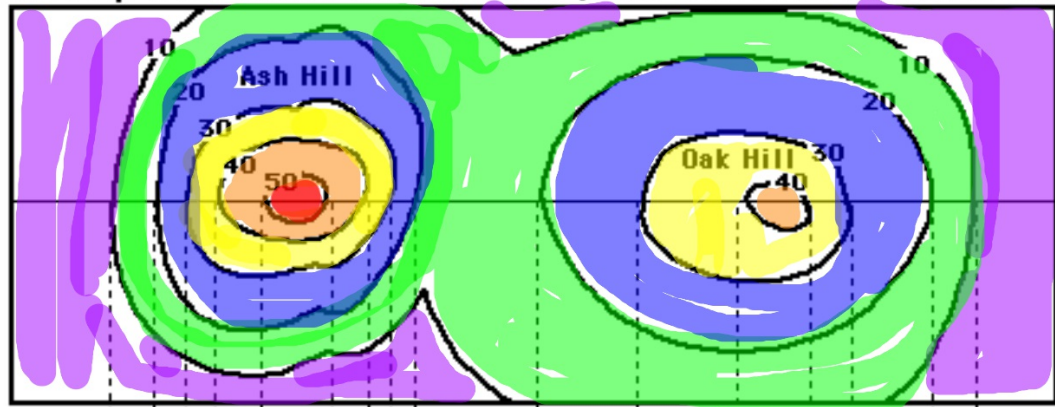
The two hills seen from the side, with elevations marked and dotted lines pointing to the corresponding contour lines.

©EnchantedLearning.com

1. Color the elevations on the topographic map as follows. Red: 50m and higher, Orange: 40-50m, Yellow: 30-40m, Light green: 20-30m, Dark green: 10-20m, Purple: 0-10m.
2. Finish the mountain diagram below the topographic map, completing Oak Hill and drawing Ash Hill with proper elevations.
3. Approximately how tall is Ash Hill? _____
4. Approximately how tall is Oak Hill? _____



Topographic Map (with contour lines that show points that are on the same level)



The two hills seen from the side, with elevations marked and dotted lines pointing to the corresponding contour lines.

